



High Speed Laminating for Laminating Shop

CHALLENGER-PLUS1020J

Laminating Speed : 100m/min (939*636 : 9400sheet/hr)

Feeding & Bursting Speed : 12,500Sheet/hrs

MAX. Paper Size : 1020(W)*720(L)mm

MAX. speed, MIN. length : 480mm

※GMP Thermalami Patented



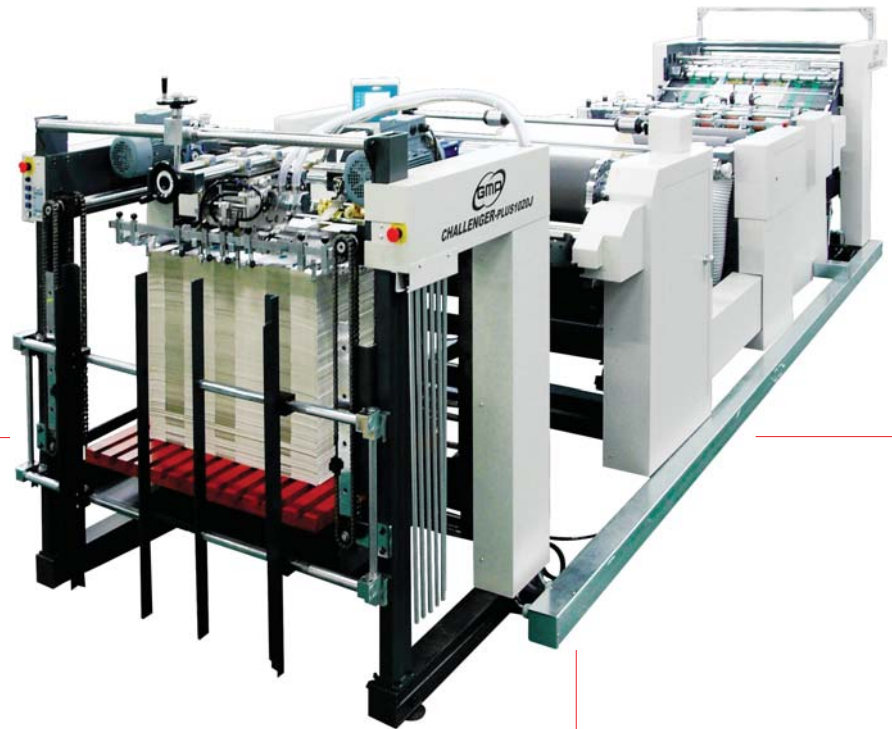
▶ Scratch-Free Matt Film



▶ Embossing Textured Laminating Film

Laminator
installed with
Embossing Roller

Heat Pressing &
Embossing for Thermalami



Induction Heating Roller Installed
for Precise Temperature Control



POLYNEX Film



Paper Register

- High speed, large quantity laminating job 12,500sheet/hr.
- 1m stacking space decreasing job cycle time
- Precise and durable high quality German Eurotherm(SSD) Servo System
- Precise Feeding System for Large quantity Laminating
- Ultra-precise temperature control induction heating roller - patented product
- Semi-permanent, periodic check and maintenance free heating roller
- Strong cooling fan suitable for high-speed laminating

CHALLENGER-PLUS1020J

www.gmp.com

▶ ISO 9001:2000 Certificate

▶ ISO 14001 Certificate

▶ RoHS Certificate

▶ UL-WTDP, CB-TMP Lab. Certificate



KOSDAQ Registered Corporation(NO. 018290)

GMP GMP CO., LTD.



CHALLENGER-PLUS1020J

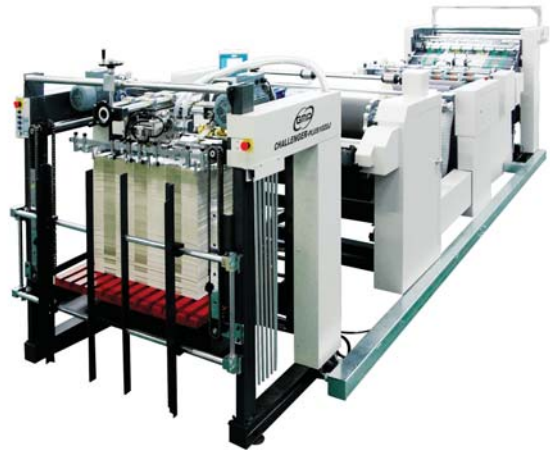
Main Device



▶ SSD(Eurotherm) Touch Panel



▶ Paper Register



Heidelberg Feeder (Option)

- In case of installing this feeder, feeding 12,000sheets/hr is possible. (form 80g/㎡ paper)



Type of embossing patterns

- ▶ Various types of embossing offer high quality and capacity on demand



• Linen Texture



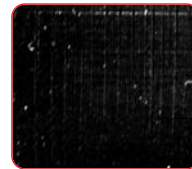
• Fine Texture



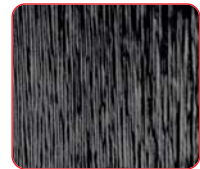
• Leather



• Sparkler



• Silky Texture



• Hair Line

Thermalami Film

- GMP POLYNEX (OPP Base Thermalami Film)

POLYNEX Thermal Gloss - 20	ECONOMIC Gloss Film
POLYNEX Thermal Gloss - 25	Gloss Film
POLYNEX Thermal Matt - 22	ECONOMIC Matt Film
POLYNEX Thermal Matt - 28	Matt Film
POLYNEX Thermal Gloss Emboright - 40	Embossing & High gloss Film
POLYNEX Thermal Matt Antiscuff - 31	Scuff-free matt Film
POLYNEX Thermal Gloss Digital Supermelt - 40	Digital Print Supermelt Gloss Film
POLYNEX Thermal Matt Digital Supermelt - 43	Digital Print Supermelt Matt Film
POLYNEX Thermal Hologram - 40	Hologram Film
POLYNEX Thermal Silver Gloss - 40	Silver Color film for Embossing Laminating

- GMP NYLONEX (Nylon Base Thermalami Film)

NYLONEX Gloss - 27	Curl & Scratch Free Gloss Film
NYLONEX Matt - 31	Curl & Scratch Free Matt Film
NYLONEX Gloss Digital Supermelt - 40	Curl & Scratch Free Gloss Film for Digital Print
NYLONEX Matt Digital Supermelt - 44	Curl & Scratch Free Matt Film for Digital Print

- GMP PERFEX (OPP Base Thermalami Film)

PERFEX Gloss - 25	Gloss Film
PERFEX Gloss - 38	High gloss & Deep Image Film
PERFEX Matt - 32	Matt Film
PERFEX Matt - 38	Deep image Matt film
PERFEX Sliver - 25	High gloss Silver Film

* PERFEX Film for Sliver, Gold & UV printing



Specifications

Model Name		CHALLENGER-PLUS1020J	
Laminator Dimensions	1650(W)*7150(L)*1855(H)mm	Heating System	Induction Heating System
Max. Laminating Speed	100m/min (939*636 : 9400sheet/hr)	Max. Laminating Temperature	140 °C MAX.
Max. Feeding Speed	12500 sheet/hr	Temperature Control	PID Control
Max. Speed, Min. Length	480mm	Operating System	Motion Control System
Max. Sheet Format	1020(W)*720(L)mm	Main Driving	Eurotherm 7.5kw Induction Motor with Vector Driver
Min. Sheet Format	210(W)*250(L)mm	Feeder Driving	Eurotherm 0.4kw Induction Motor with Vector Driver
Laminating Film	POLYNEX, NYLONEX, PERFEX, MICRONEX	Nip Pressure	Pneumatic Cylinder
Thickness of Substrate(Paper)	120~480g/㎡	Film Core	Air Shaft (3")
Feeder Loading Height	1000mm	Cooling System	Air cooling with Blower
Power Requirements	AC 380~400V, 3N, 50/60Hz	Feeding	GMP Syncro Stream Feeder
Power Consumption	50 kw	Cutting	Bursting with nicking knife & perforator
Warm up Time	20min		

GMP reserves the right to after change specifications without prior notice.