



Suitable for Large Volume Laminating of Offset & Digital Printing

CHALLENGER ECO-1020 Series

Laminating Speed : 75m/min
Feeding & Bursting Speed : 10,000 sheet/hr
MAX. Paper Size : 1020(W)*720(L)mm

- ▷ CHALLENGER ECO-1020J G50R20
- ▷ CHALLENGER ECO-1020J H74R20
- ▷ CHALLENGER ECO-1020J H74R20F102M
- ▷ CHALLENGER ECO-1020N G50R20
- ▷ CHALLENGER ECO-1020N H74R20
- ▷ CHALLENGER ECO-1020N H74R20F102M

※GMP Thermalami Patented

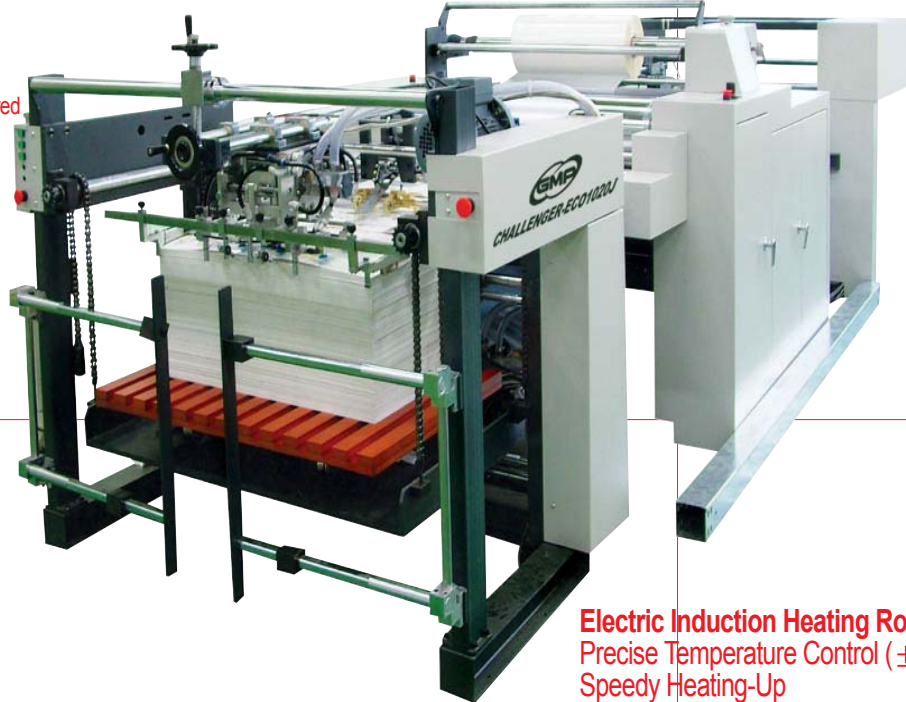
▶ Scratch-Free Matt Film

▶ Embossing Textured Laminating Film

Laminator installed with Embossing Roller

Heat Pressing & Embossing for Thermalami

Index
 • G50= GMP Stream Feeder 50 • R20= Rotary Knife 20
 • H74= Heidelberg Feeder 74 • F102M= Flying Knife 102 Module



Electric Induction Heating Roller System
 Precise Temperature Control ($\pm 1^{\circ}\text{C}$)
 Speedy Heating-Up
 Long Life



POLYNEX Film

- High Quality Laminating with Perfect Adhesion for all Kinds of Materials
- Perfect Laminating with Excellent Chromogenic Result and No Air Bubble
- In-Line System with Full Automatic High-Speed Feeding, Laminating, Cutting and Stacking
- Precise & Durable PLC Control System
- Touch Panel for Easy Operation
- Feeding Device with Servo Drive & Alignment System
- Installed Automatic Paper Stacking Table
- Maximize the Value of Laminated Result with Hot Spot Stamping or Different Patterned Embossing
- Increase the Value-added Effect with Various kinds of Films and Special Effect
- Available Machine Status Checking by Internet (Option)
- Installed Air Shaft to make easy the Film Exchange and the Side Alignment while in operation
- Installed Decurling Device to avoid Curling



Automatic Stacking Table

CHALLENGER ECO-1020 Series

www.gmp.com



KOSDAQ Registered Corporation(NO. 018290)





CHALLENGER ECO-1020 Series

Automatic Stacking Table

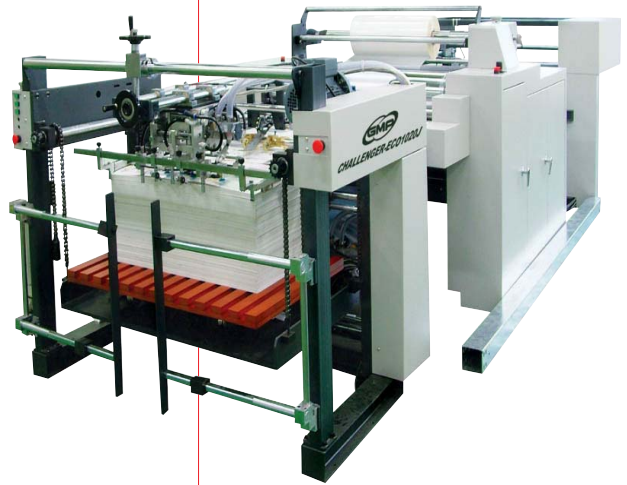
- A Stacking and palletized accessory for perfect alignment of finished output eliminates the need for hand joggling and pallet loading



- * Model : Automatic Stacking Table
- * Out-put Height : 750mm
- * Paper Size(MAX) : 1,100x1,200mm
- * Dimensions(WxLxH) : 1,720 x 1,350 x 1,230mm
- * Power Requirements : AC 220V, 60Hz



Heidelberg Feeder (Option)

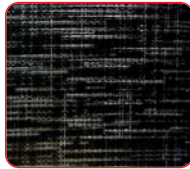


Type of embossing patterns

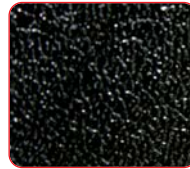
- Various types of embossing offer high quality and capacity on demand



• Linen Texture



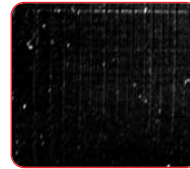
• Fine Texture



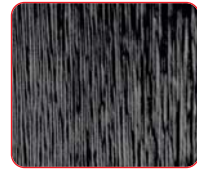
• Leather



• Sparkler



• Silky Texture



• Hair Line

Thermalami Film

- GMP POLYNEX (OPP Base Thermalami Film)

POLYNEX Thermal Gloss - 20	ECONOMIC Gloss Film
POLYNEX Thermal Gloss - 25	Gloss Film
POLYNEX Thermal Pure Gloss - 20	Pure Gloss Film
POLYNEX Thermal Matt - 22	ECONOMIC Matt Film
POLYNEX Thermal Matt - 28	Matt Film
POLYNEX Thermal Pure Matt - 22	Pure Matt Film
POLYNEX Thermal Gloss Emboright - 40	Embossing & High gloss Film
POLYNEX Thermal Matt Antiscuff - 31	Scuff-free matt Film
POLYNEX Thermal Gloss Digital Supermelt - 40	Digital Print Supermelt Gloss Film
POLYNEX Thermal Matt Digital Supermelt - 43	Digital Print Supermelt Matt Film
POLYNEX Thermal Hologram - 40	Hologram Film
POLYNEX Thermal Silver Gloss - 40	Silver Color film for Embossing Laminating

- GMP NYLONEX (Nylon Base Thermalami Film)

NYLONEX Gloss - 27	Curl & Scratch Free Gloss Film
NYLONEX Matt - 31	Curl & Scratch Free Matt Film
NYLONEX Gloss Digital Supermelt - 40	Curl & Scratch Free Gloss Film for Digital Print
NYLONEX Matt Digital Supermelt - 44	Curl & Scratch Free Matt Film for Digital Print

- GMP PERFEX (OPP Base Thermalami Film)

PERFEX Gloss - 25	Gloss Film
PERFEX Gloss - 38	High gloss & Deep Image Film
PERFEX Matt - 32	Matt Film
PERFEX Matt - 38	Deep image Matt film
PERFEX Sliver - 25	High gloss Silver Film

- * PERFEX Film for Sliver, Gold & UV printing



Specifications

Model Name	CHALLENGER ECO-1020 Series		
Laminator Dimensions	1,700(W)*5,660(L)*1,670(H)mm	Heating System	Induction Heating System
Max. Laminating Speed	75m/min	Max. Laminating Temperature	140 °C
Max. Feeding Speed	10,000 sheet/hr	Temperature Control	PID Control
Max. Sheet Format	1,020(W)*720(L)mm	Operating System	Motion Control System
Min. Sheet Format	210(W)*250(L)mm	Main Driving	Parker 5.5kw Induction Motor with Vector Driver
Laminating Film	POLYNEX, NYLONEX, PERFEX, MICRONEX	Feeder Driving	Parker 0.4kw Servo Motor with Servo Driver
Thickness of Substrate(Paper)	120~480g/㎡	Nip Pressure	Pneumatic Cylinder
Feeder Loading Height	900mm	Film Core	Air Shaft (3")
Power Requirements	AC 380~400V, 3N, 50/60Hz	Cooling System	Air Cooling with Blower
Power Consumption	38kw	Feeding	GMP Syncro Stream Feeder
Warm up Time	15min	Cutting	Burst Cutting with Rotary Cutter, Perforator

GMP reserves the right to after change specifications without prior notice.