



Laminating for high speed printing, Large poster and Box **PIONEER II-11000 Series**

Laminating Speed : 70m/min
Feeding & Bursting Speed : 7,500Sheet/hrs
MAX. Paper Size : 1100(W)*1200(L)mm

▷ PIONEER MapMaker-112160 G40R30
▷ PIONEER II -11000 G40R30

※GMP Thermalami Patented

▶ Scratch-Free Matt Film

▶ Embossing Textured Laminating Film

Laminator installed with Embossing Roller

Heat Pressing & Embossing for Thermalami



Index
•G40= GMP Stream Feeder 40
•R30= Rotary Knife 30



POLYNEX Film

Electric Induction Heating Roller System
Precise Temperature Control ($\pm 1^{\circ}\text{C}$)
Speedy Heating-Up
Long Life



Automatic Stacking Table

- Reduce working hour considerably, as it is possible to laminate 4x6 paper in width
- Suitable for the manufacturing process of package box
- High speed system with and integrated feeder and separator
- All electronic functions are controlled by a Simens PLC, Servo motor and Driver
- After Lamination, the laminated paper is stacked automatically (Option)

PIONEER II-11000 Series

www.gmp.com



KOSDAQ Registered Corporation(NO. 018290)

GMP GMP CO., LTD.



PIONEERII-11000 Series

Automatic Stacking Table

- A Stacking and palletized accessory for perfect alignment of finished output eliminates the need for hand jogging and pallet loading



- * Model : Automatic Stacking Table
- * Out-put Height : 750mm
- * Paper Size(MAX) : 1,100x1,200mm
- * Dimensions(WxLxH) : 1,720 x 1,350 x 1,230mm
- * Power Requirements : AC 220V, 60Hz

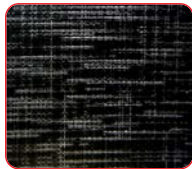


Type of embossing patterns

- ▶ Various types of embossing offer high quality and capacity on demand



• Linen Texture



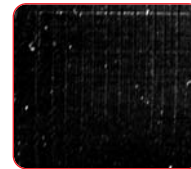
• Fine Texture



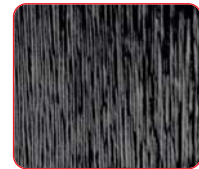
• Leather



• Sparkler



• Silky Texture



• Hair Line

Thermalami Film

- GMP POLYNEX (OPP Base Thermalami Film)

POLYNEX Thermal Gloss - 20	ECONOMIC Gloss Film
POLYNEX Thermal Gloss - 25	Gloss Film
POLYNEX Thermal Pure Gloss - 20	Pure Gloss Film
POLYNEX Thermal Matt - 22	ECONOMIC Matt Film
POLYNEX Thermal Matt - 28	Matt Film
POLYNEX Thermal Pure Matt - 22	Pure Matt Film
POLYNEX Thermal Gloss Emboright - 40	Embossing & High gloss Film
POLYNEX Thermal Matt Antiscuff - 31	Scuff-free matt Film
POLYNEX Thermal Gloss Digital Supermelt - 40	Digital Print Supermelt Gloss Film
POLYNEX Thermal Matt Digital Supermelt - 43	Digital Print Supermelt Matt Film
POLYNEX Thermal Hologram - 40	Hologram Film
POLYNEX Thermal Silver Gloss - 40	Silver Color film for Embossing Laminating

- GMP NYLONEX (Nylon Base Thermalami Film)

NYLONEX Gloss - 27	Curl & Scratch Free Gloss Film
NYLONEX Matt - 31	Curl & Scratch Free Matt Film
NYLONEX Gloss Digital Supermelt - 40	Curl & Scratch Free Gloss Film for Digital Print
NYLONEX Matt Digital Supermelt - 44	Curl & Scratch Free Matt Film for Digital Print

- GMP PERFEX (OPP Base Thermalami Film)

PERFEX Gloss - 25	Gloss Film
PERFEX Gloss - 38	High gloss & Deep Image Film
PERFEX Matt - 32	Matt Film
PERFEX Matt - 38	Deep image Matt film
PERFEX Sliver - 25	High gloss Silver Film

- * PERFEX Film for Sliver, Gold & UV printing



Specifications

Model Name	PIONEERII-11000 Series		
Laminator Dimensions	1,970(W)*3,540(L)*1,650(H)mm	Max. Laminating Temperature	140℃
Max. Laminating Speed	70m/min	Temperature Control	PID Control
Max. Feeding Speed	7,500 sheet/hr	Operating System	Siemens PLC (Programmable Logic Controller)
Max. Sheet Format	1,100(W)*1,200(L)mm	Main Driving	Siemens 5kw Servo Motor with Servo Driver
Min. Sheet Format	210(W)*350(L)mm	Feeder Driving	Siemens 0.4kw Servo Motor with Servo Driver
Laminating Film	POLYNEX, NYLONEX, PERFEX, MICRONEX	Nip Pressure	Pneumatic Cylinder
Thickness of Substrate(Paper)	120-400g/㎡	Film Core	Air Shaft (3")
Feeder Loading Height	750mm	Cooling System	Air Cooling with Blower
Power Requirements	AC 380-400V, 3N, 50/60Hz	Feeding	GMP Syncro Stream Feeder
Power Consumption	35 kw	Cutting	Burst Cutting with Nicking Knife and Perforator
Warm up Time	15min	Weight	3,200kg
Heating System	Induction Heating System		

GMP reserves the right to after change specifications without prior notice.